

Harnessing the Power of Mobile Computers

for Advanced Environmental Measurements



DIRECT SENSE AIR

Air Velocity Meter



DIRECTSENSE™ AIR AIR VELOCITY METER

Airspeed measurement has evolved to an advanced new level. The DirectSense™ AIR integrates precision hotwire sensor technology and GrayWolf's comprehensive WolfSense™ software with the POWER AND PERFORMANCE of mobile PC computing.

- Measures Air Velocity and Volume Flow
- Extremely easy to use
- Large color display of measurements, sensor tips, related industry documents and more.
- Versatile Averaging function
- Stores measurements along with date, time, text, graphics, audio and more
- Optional fumehood face velocity and duct traverse calculation software
- Patented telescoping hotwire probe design eliminates internal cabling, avoids cable kinking and chafing
- Optional 90 degree articulating probe



GRAYWOLF™
SENSING SOLUTIONS
6 RESEARCH DRIVE
SHELTON, CT 06484
PH. 203-402-0477
FAX: 203-402-0478

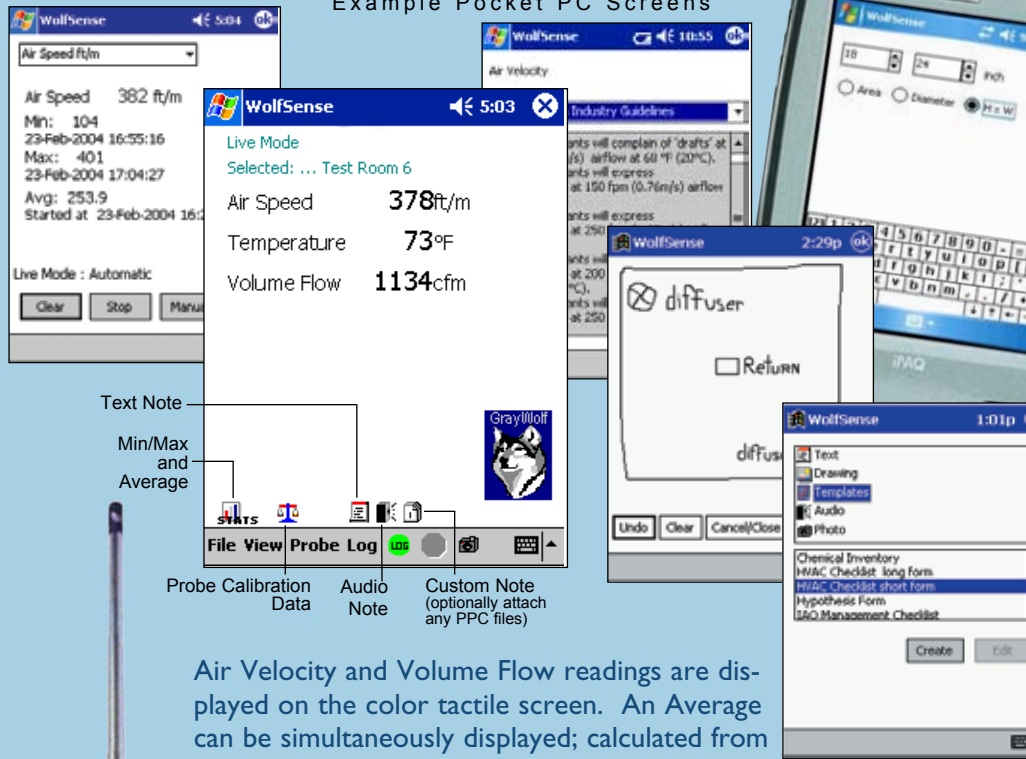
EMAIL: SALESTEAM@WOLFSENSE.COM

WEBSITE: WWW.WOLFSENSE.COM

Superior Technology for Enhanced Airspeed Testing



Example Pocket PC Screens



Text Note

Min/Max and Average

File View Probe Log

Probe Calibration Data

Audio Note

Custom Note (optionally attach any PPC files)

Air Velocity and Volume Flow readings are displayed on the color tactile screen. An Average can be simultaneously displayed; calculated from a choice of manually input readings or measurements auto-updated at one-second intervals.

“Snapshot” measurements can be logged at the push of a button or a tap of the screen. Enter a description of the measurement location plus text notes, Pocket Word™ field forms, graphic files, audio memos, statistics, calibration data and more. Save time, improve efficiency and enhance documentation.

Example Notebook PC Screen

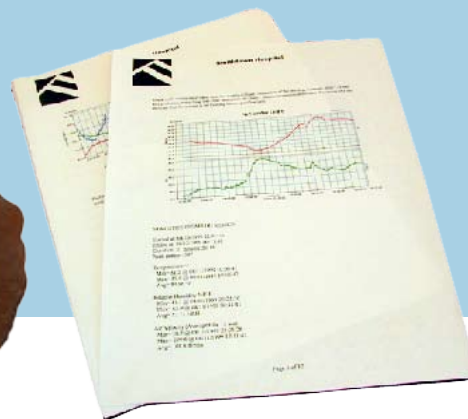


The DirectSense AIR is supplied with WolfSense PC software for desktop data transfer, analysis and graph generation. Optional WolfSense ARG software automates the reporting process.

DuctCal™



GrayWolf's DuctCal software accurately calculates and displays measurements using the user through a choice of Equal Area duct traverses.



④ Display

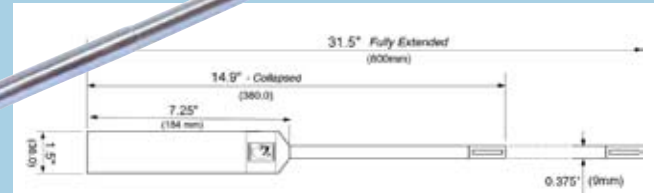
④ Notate

④ Data Log

④ Organize

④ Report

AIR VELOCITY
VOLUME FLOW



AS-201

The AS-201 and AS-202A hotwire anemometer probes measure air velocity over a wide range, yet have exceptional low velocity accuracy and repeatability. Both probes telescope, while the AS-202A also has an articulating tip (excellent for reaching ceiling diffusers/filters and for fumehood face velocity balancing). The probes are ideally suited for applications ranging from IAQ (thermal comfort), to cleanrooms, to general HVAC testing.

AS-202A



HoodCal™

Fumehood face velocity software identifies air velocity sensor positioning and guides the user step-by-step on through to a detailed report that prints each measurement point and PASS/FAILs the test based on user selected criteria.



PM-201
Particulate Concentration



RH-302
Relative Humidity & Temperature probe



IQ-610
Carbon Dioxide, Carbon Monoxide, VOCs, Temperature, and %RH probe



TG-501
NO, SO₂, EtO, Cl₂, H₂S, HCN, O₂, NO₂, NH₃, O₃ and more. Up to five sensors plus °F/°C in one probe.



PC-GW6
6-Channel Particle Counter



ZEPHYR
Differential Pressure (Also Air Velocity via pitot tube or telescoping hotwire probe)



the add-on module for measurement points, walk-through of Log-Tchebycheff or

GrayWolf offers optional probes to expand your measurement capabilities





DIRECT SENSE™ AIR

Air Velocity Meter

SPECIFICATIONS: AS-201/AS-202A

Air Velocity: Range: 0–6,000 ft/min (0.00–30.00 m/s)

Accuracy: +/- 3% rdg +/- 3 ft/min (0.015 m/s)

Temperature: Range: 15° to 160°F (-10° to +70°C)

Accuracy: +/- 2°F (1.1°C)

Stated temperature accuracy is in a minimum 50 ft/min (0.25 m/s) airflow. This probe has significantly reduced temperature accuracy in still air due to heat generated by the "hotwire".

Probe Dimensions AS-201 : 31.5" (800mm) L extended,
14.9" (380mm) L collapsed

0.375" (9mm) dia tip, 0.4375" (11mm) telescope base

1.5" (38mm) diameter handle, 7.25" (185mm) L

Probe Dimensions AS-202A : 37" (940 mm) L extended

21" (530mm) L collapsed

6" (150mm) L tip articulates to 180°, 90°, or 45°

0.375" (9mm) dia tip, 0.4375" (11mm) telescope base

1.5" (38mm) diameter handle, 7.25" (185mm) L

Weight (probe): w/batteries 13 oz (375 gm)

Power (probe): 2 x AA cells; typical battery life 30 hrs.
(Computer battery life varies by make and model)

PC Software Requirements: Windows 2000/XP/Vista or
MS.NET 1.1 or higher

30MB hard disc (min.) space

GRAYWOLF SOFTWARE IS 21 CFR PART 11 COMPLIANT

ALL SPECIFICATIONS ARE TO SUBJECT TO CHANGE WITHOUT FURTHER NOTICE

- The DirectSense AIR PPC is a complete kit that includes the Windows Mobile Pocket PC computer, AS-201 Airspeed probe, WolfSense PPC application software, WolfSense PC desktop PC reporting software, PCC-PH01 belt case, PCC-06AS probe pouch and more.
- Customized kits (with or without computer) can be ordered to meet your specific needs. Contact GrayWolf for details.
- Software and connector adapters are available to make your probe(s) compatible across multiple platforms (Pocket PCs, Tablet PCs, Ultra-Mini Notebooks, Laptops, etc).
- Hardshell cases (best protection for AS-202A), 3rd party software, optional WolfSense Advanced Report Generator software and other accessories are also available.



GRAYWOLF™ SENSING SOLUTIONS

6 RESEARCH DRIVE
SHELTON, CT 06484 USA
PH. 203-402-0477
FAX: 203-402-0478

ADVANCED ENVIRONMENTAL MEASUREMENTS



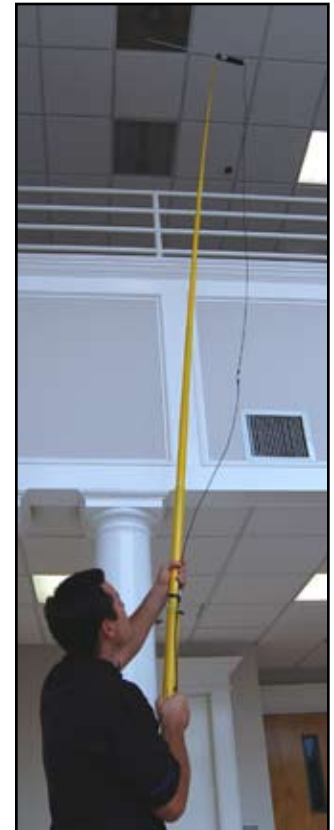
PCC-10P
Hard-shell case
(Shown with
AS-202A)



AS-202A on ACC-TPD1
tripod and ACC-TPD-AS
mount



AS-201 on ACC-XT-ROD
extension rod and
ACC-TPD-AS mount



ACC-PR3
2 1/2 inch IR
printer (b&w)



ACC-PR1 8 1/2x11 color
bluetooth printer

GRAYWOLF SENSING SOLUTIONS

TUAMGRANEY INDUSTRIAL ESTATE,
UNIT 8
TUAMGRANEY, Co CLARE, IRELAND
PH. (353)61921736
FAX: (353)61921528

EMAIL: SALESTEAM@WOLFSENSE.COM

WWW.WOLFSENSE.COM