



# Rental Program

Rent from the Manufacturer (with Up-To-Date **Factory** Calibrations and significant Rebates toward equipment purchase)

1-800-218-7997

**DIRECT SENSE<sup>®</sup> TVOC**  
Multi-Gas, PID Meter

**ADVANCED SENSE<sup>™</sup> TVOC**  
Multi-Gas, PID Instrument

## TVOC Multi-Gas Monitoring Kits

DirectSense Weekly Rate:	<b>\$395</b>	DirectSense Monthly Rate:	<b>\$1,095</b>
AdvancedSense Weekly Rate:	<b>\$495</b>	AdvancedSense Monthly Rate:	<b>\$1,395</b>



PH-12S PocketPC

### Includes:

**TG-502L\*** Probe, with ppb range PID sensor installed, for VOC, Temperature and %RH measurement (note: for higher range VOC measurements, specify the TG-502H\* with ppm range PID installed).

### -plus-

- PH-12S** Mobile Windows PocketPC™ computer --OR-- AdvancedSense datalogger
- WolfSense** Application software, probe adapter (PPC)
- WolfSense PC** data download, graphing and analysis software
- WolfSense ARG** Advanced Report Generator software
- PCC-PH01** or **PCC-AS01** case with belt clip and detachable neck strap
- PCC-05IQ** probe pouch with shoulder strap for hands-free, walk-through surveys
- PCC-10** Hard-shell Security case for in-situ monitoring

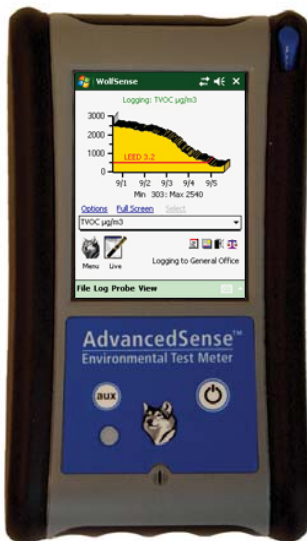
### OPTIONS

OPTIONS	WEEKLY	MONTHLY
<b>TG-501* Gas Sensor Probe</b> (not including gas sensors)	\$200	\$475
<b>NO<sub>2</sub>, SO<sub>2</sub>, NO, NH<sub>3</sub>, O<sub>2</sub>, H<sub>2</sub>S, CO or O<sub>3</sub></b> (each)	\$125	\$200
<b>Cl<sub>2</sub>, EtO or H<sub>2</sub>S/CO combo</b> (each)	\$175	\$275

\*Up to 3 additional electrochemical gas sensors may be installed in the TG-502 probe and up to 5 may be installed into the TG-501 probe. Specific sensor availability is limited, inquire regarding availability.

<b>IQ-410</b> Probe with CO <sub>2</sub> , CO, %RH and temperature sensors)	\$250	\$735
<b>AS-201</b> Telescoping Hotwire Air Velocity probe	\$105	\$295
<b>WolfPack Modular Area Monitor</b> added (PCC-16 case sub'd)	\$250	\$700
<b>PC-GW6A-KIT</b> 6-channel Particle Counter, interface card or AS cable, hardshell case. Displays counts and/or µg/m3.	\$425	\$1150
<b>PM-205-KIT</b> Thermo Particle Concentration meter with red and blue cyclones, interface card or AS cable, soft case	\$595	\$1650
<b>AD-U4</b> multi probe adapter & <b>PCC-15</b> dual probe case upgrade	\$80	\$235
<b>ACC-APUMP1</b> Battery powered air pump with belt clip for drawing samples across probe (use together with CA-HD2 listed below)	\$25	\$75
<b>AD-L7F-USBF</b> Camera/USB key download cable (AdvancedSense/WP)	\$10	\$25
<b>ACC-CAM-P1</b> Shockproof/waterproof camera (AdvancedSense/WP)	\$50	\$150
<b>CA-HD2**</b> Gas calibration hood	\$10	\$25
<b>ACC-REG1</b> Regulator & 2 cylinder hard-shell case	\$15	\$45

\*\* (No gases included; reference gas cylinders are available for sale, not rental)



AdvancedSense



PM-205



CA-GS25L/H



WolfPack



PCC-10

## GrayWolf Sensing Solutions

advanced environmental instrumentation

6 Research Drive, Shelton, CT USA Tel: (203) 402-0477 Fax: (203) 402-0478

e-mail: [Salesteam@GrayWolfSensing.com](mailto:Salesteam@GrayWolfSensing.com)

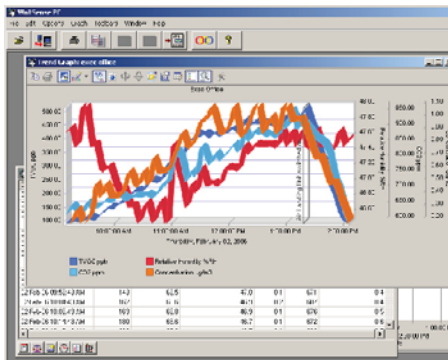
[www.GrayWolfSensing.com](http://www.GrayWolfSensing.com)

August 2011

Rental Program



Probe pouch(es), along with instrument pouch (not shown) allow for hands-free operation during walk-thru surveys



WolfSense PC data transfer software



WolfSense ARG report

**WolfSense PC** software allows logged data to be down-loaded to your PC for review, graph generation, cut & paste reporting and/or simple export to Excel

#### WolfSense ARG Advanced Report Generator

A Template Design Wizard walks the user through report set-up:

- Define how to display measured data (CO<sub>2</sub>, CO, %RH, Temperature, VOCs, etc).
- Select from a list of government and industry guidelines to include for each parameter.
- Choose from and edit canned text blocks with general IAQ background info.
- Automatically insert notes taken in the field on the mobile PC; text, drawings, photos.
- Create and insert graphs with comments, alarm/guideline lines.
- Add equipment descriptions/specs/photos, probe calibration info, company information/logos and much more

#### REBATE UPON PURCHASE

**Want to buy the equipment that you've rented?** Purchase the kit that's been shipped to you and apply 75% of the rental price that you paid (up to a maximum of 75% of the total purchase price) toward the purchase price. In some cases, dependent on the condition of the equipment shipped to you, a "demo/rental equipment discount" may also be available.

**Want to send the kit back and order a brand new unit?** As long as you order within 6 months from the date that you return your rental kit, you can apply 35% of the rental price that you paid... (up to a maximum of 50% of the total purchase price) toward your purchase.

**Security Deposit:** Rentals may require a (refundable) security deposit (covering the value of the rental equipment), if appropriate credit terms have not been previously established and maintained with GrayWolf. Allow 10 business days from the time that you supply adequate credit references for a new open account to be set up.

*Gray Wolf Sensing Solutions cannot guarantee the availability of rental equipment. The quoted \$US rental pricing is exclusively available to clients in the USA and Canada, and is subject to change. Contact your local distributor for rental pricing and availability in other countries.*

## GrayWolf Sensing Solutions

advanced environmental instrumentation

6 Research Drive, Shelton, CT USA Tel: (203) 402-0477 Fax: (203) 402-0478

e-mail: [Salesteam@GrayWolfSensing.com](mailto:Salesteam@GrayWolfSensing.com)

[www.GrayWolfSensing.com](http://www.GrayWolfSensing.com)